

LEGGI E CONSERVA QUESTE ISTRUZIONI
READ AND SAVE THESE INSTRUCTIONS



Dimensions (mm)

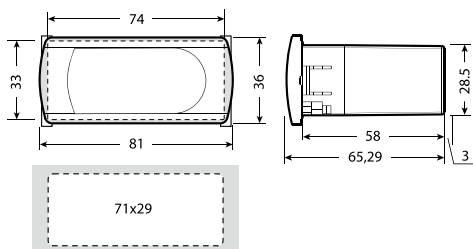


Fig. 1

Panel mounting

Rear (with 2 quick-fit side brackets)

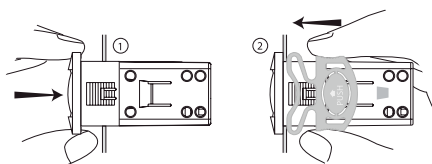


Fig. 2

Electrical connections

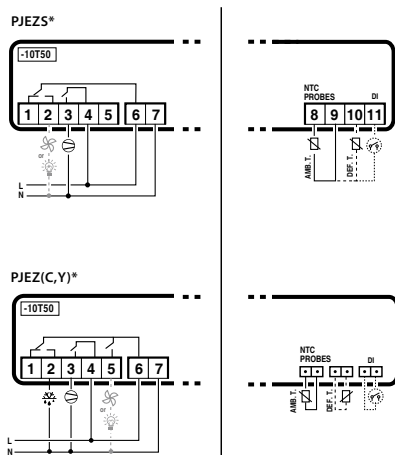


Fig. 3

Safety standards:

Installation precautions:

- the connection cables must guarantee insulation up to 90 °C;
- ensure a space of at least 10 mm between the case and the nearby conductive parts;
- digital and analogue input connections less than 30m away; adopt suitable measures for separating the cables so as to ensure compliance with the immunity standards; Secure the connection cables of the outputs so as to avoid contact with very low voltage parts.

Disposal of the product

The appliance (or the product) must be disposed of separately in accordance with the local waste disposal legislation in force.

Description

PJEZ* (models S, Y, C) represent a range of electronic microprocessor controllers with LED display developed for the management of refrigerating units, display cabinets and showcases.

- PJEZS*, designed for the management of static refrigerating units, no fan on the evaporator, operating at temperature above 0°C;
- PJEZY*, designed for the management of static refrigerating units, no fan, operating at low temperatures;
- PJEZC*, designed for the managements of low temperature ventilated refrigerating units.

Technical specifications

power supply	230 Vac +10 /-15% 50/60 Hz; 115 Vac +10 /-15% 50/60 Hz
rated power	3.5 VA
inputs	NTC probes 1 or 2 inputs 1 digital input
relay outputs	30 A relay UL: 16 A Res. 16 FLA 96 LRA - 240 Vac (FASTON tabs) EN60730-1: 20(10) A 250 Vac (FASTON tabs) UL: 12 A Res. 12 FLA 72 LRA - 240 Vac EN60730-1: 12(10) A 250 Vac 8 A relay UL: 8 A Res. 2 FLA 12 LRA - 240 Vac C300, EN60730-1: 8(4) A NO, 6(4) A NC, 2(2) A CO - 250 Vac 5 A relay UL: 5 A Res. 1 FLA 6 LRA - 240 Vac C300, EN60730-1: 5(1) A - 250 Vac
type of probe	Std CAREL NTC 10 K Ω at 25 °C
connections	for screw terminals, cross-section of cables from 0.5 mm2 to 1.5 mm2, rated maximum current per terminal 12A for FASTON tabs, cross-section of cables up to 2.5 mm2, rated maximum current per terminal 20A
assembly	use rear brackets
display	2 digit LED display with sign (-99 to 99) and decimal point; four status LEDs
operating conditions	-10T50 °C - humidity <90% rH non-condensing
storage conditions	-20T70 °C - humidity <90% rH non-condensing
range of measurement	-50T90 °C - resolution 0.1 °C
front panel index of protection	panel installation with IP65 type 1 gasket
case	plastic terminal, 81x26x65 mm
classification according to protection against electric shock	Class II when suitably integrated
environmental pollution	normal
PTI of the insulating material	250V
period of stress across the insulating parts	long
category of resistance to heat and fire	category D (UL94 - V2)
immunity against voltage	category 1
type of action and disconnection	1C relay contacts
no. of relay automatic operating cycles	100,000 operations
software class and structure	Class A
cleaning the instrument	only use neutral detergents and water
cable max. length	probes: 30m, relay: 10m

WARNING:

- do not run the power cable less than 3 cm from the bottom part of the device or from the probes;
- the connections only use copper wires;
- relay not allowed to use on fluorescent lamp(neon) with phase-shift capacitors.

Table of alarms

Alarm code	LED	Description	Parameters involved
E0		probe 1 error = control	-
E1(*)		probe 2 error = defrost	[d0 = 0 / 1]
dr(*)		open door alarm	
Lo		low temperature alarm	[AL] [Ad][A0]
Hi		high temperature alarm	[AH] [Ad][A0]
EE		unit parameter error	-
EF		operating parameter error	-

(*) not available for PJEZS*E*

IMPORTANT WARNINGS

The CAREL product is a state-of-the-art device, whose operation is specified in the technical documentation supplied with the product or can be downloaded, even prior to purchase, from the website www.carel.com. The customer (manufacturer, developer or installer of the final equipment) accepts all liability and risk relating to the configuration of the product in order to reach the expected results in relation to the specific final installation and/or equipment. The failure to complete such phase, which is required/indicated in the user manual, may cause the final product to malfunction; CAREL accepts no liability in such cases. The customer must use the product only in the manner described in the documentation relating to the product. The liability of CAREL in relation to its products is specified in the CAREL general contract conditions, available on the website www.carel.com and/or by specific agreements with customers.

Parameters table

Table of parameters for PJEZY*,PJEZC*,PJEZS*J*

	Description	Type	Min	Max	Def.	UOM
PS	1PS Password	F	0	99	22	-
-C1	1C1 Probe 1 calibration	F	-20	20	0	°C
-C2	1C2 Probe 2 calibration	F	-20	20	0	°C
St	1St Control temperature	F	-50	90	4.0	°C
rd	1rd Control differential	F	0	19	2.0	°C
c0	1c0 Comp. and fan start delay after start-up	C	0	99	0	Min
c2	1c2 Min. compressor off time	C	0	99	3	Min
d0	1d0 Type of defrost (0= heater; 1= hot gas; 2= heater by time; 3= hot gas by time; 4= heater by time with temp. cont.)	C	0	4	0	-
dI	1dI Interval between two defrosts	C	0	24	8	Hour
dt	1dt End defrost temperature	C	-50	90	12	°C
dP	1dP Max. or effective defrost duration	C	1	99	30	Min
dd	1dd Dripping time after defrost	C	0	15	2	Min
A0	1A0 Fan and alarm differential (≤0,AL and AH expressed as absolutes; >0,AL and AH expressed relative to the set point)	C	-20	20	-2.0	°C
AL	1AL Low temperature alarm threshold/deviation (when A0≤0,AL=-50:alarm disable, when A0>0, AL=0:alarm disable)	C	-50	90	-50	°C
AH	1AH High temperature alarm threshold/deviation (when A0≤0,AH=90:alarm disable, when A0>0, AH=0:alarm disable)	C	-50	90	90	°C
Ad	1Ad Low and high temperature alarm delay	C	0	99	0	Min
A4	1A4 door related FAN or Light management 0= input not active 1=door opening with FAN OFF 2= door opening with Light ON(FAN is not available, Light output is activated)	C	0	2	0	-
F0	1F0 enable fan control	C	0	1	0	-
F1	1F1 Fans shutdown temperature	F	-50	99	5.0	°C
F2	1F2 fan off when compressor off	C	0	2	1	-
F3	1F3 fan states during defrost	C	0	1	1	-
Fd	1Fd post-dripping time	C	0	15	0	Min
F4	1F4 Start delay when FAN ON is required by the Regulation	C	1	99	3	Sec
F5	1F5 Fan Duty Cycle(with F2=2): ON time	C	1	99	5	Min
F6	1F6 Fan Duty Cycle(with F2=2) : OFF time	C	1	99	5	Min
r1	1r1 Minimum set point allowed to the user	C	-50	r2	-50	°C
r2	1r2 Maximum set point allowed to the user	C	r1	90	90	°C

Table of parameters for PJEZS*E*

	Description	Type	Min	Max	Def.	UOM
PS	1PS Password	F	0	99	22	-
-C1	1C1 Probe 1 calibration	F	-20	20	0	°C
St	1St Control temperature	F	-50	90	4.0	°C
rd	1rd Control differential	F	0	19	2.0	°C
c0	1c0 Comp. and fan start delay after start-up	C	0	99	0	Min
c2	1c2 Min. compressor off time	C	0	99	3	Min
dI	1dI Interval between two defrosts	C	0	24	8	Hour
dP	1dP Max. or effective defrost duration	C	1	99	30	Min
dd	1dd Dripping time after defrost	C	0	15	2	Min
A0	1A0 Fan and alarm differential (≤0,AL and AH expressed as absolutes; >0,AL and AH expressed relative to the set point)	C	-20	20	-2.0	°C
AL	1AL Low temperature alarm threshold/deviation (when A0≤0,AL=-50:alarm disable,when A0>0, AL=0:alarm disable)	C	-50	90	-50	°C
AH	1AH High temperature alarm threshold/deviation (when A0≤0,AH=90:alarm disable, when A0>0, AH=0:alarm disable)	C	-50	90	90	°C
Ad	1Ad Low and high temperature alarm delay	C	0	99	0	Min
r1	1r1 Minimum set point allowed to the user	C	-50	r2	-50	°C
r2	1r2 Maximum set point allowed to the user	C	r1	90	90	°C

*F: frequent parameters, without password

*C: configuration parameters, with password

Fixed settings

- Minimum compressor ON time is 1 minute;
- If there is no defrost relay, the compressor will be shut down for defrost;
- Freeze the display when defrost, it returns when the temperature reaches the set point;
- Alarm is bypassed 1 hour after defrost;
- Open door alarm will be activated after detecting the door opening 5 minutes.

Setting the set point (desired temperature)

- press for 1 s, the set value will start flashing after a few moments;
- increase or decrease the value using or ;
- press to confirm the new value.

Switching the device ON/OFF

press for more than 3 s. The control and defrost algorithms are now disabled and the instrument displays the message "OFF" alternating with the temperature read by the set probe.

Manual defrost (only for models C/Y)

press down for DOWN more than 3 s (the defrost starts only the temperature conditions are valid).

Show defrost probe temperature(only for models C/Y)

press and together.

Access and setting type F (frequent) and type C (configuration) parameters

- press for 3 s (the display will show "PS");
- to access the type F and C parameter menu, enter the password "22" using / .
- to access the F parameter menu only, press (without entering the password);
- scroll inside the parameter menu using / .

To display/set the values of the parameter displayed, press , then / and finally to confirm the changes (returning to the parameter menu).

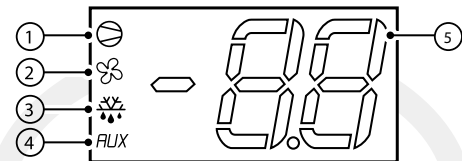
To save all the new values and exit the parameter menu, press for 3 s;

To exit the menu without saving the changed values (exit by timeout) do not press any button for at least 60 s.

Display and functions

During normal operation, the controller displays the ambient temperature. In addition, the display has LEDs that indicate the activation of the control functions (see Table 1), while the 3 buttons can be used to activate/deactivate some of the functions (see Table 2).

LEDs and associated functions



index	function	normal operation		Start up
		ON	OFF	
1	compressor	on	off	blink request
2	fan	on	off	request
3	defrost	on	off	request
4	aux	output on	output off	-
5	digit	2 digit LED display with sign (-99 to 99) and decimal point		on

Table.1

Table of functions activated by the buttons



button	normal operation		start up
	pressing the button alone	pressed together	
	more than 3 s: toggle ON/OFF	pressed together	-
	more than 3 s: start/stop defrost	display defrost probe temp.	Pressed together start parameter reset procedure
	1 s: display/set the set point More than 3 s: access parameter setting menu(enter password '22')	-	For 1 s: display firmware vers. code

Table.2